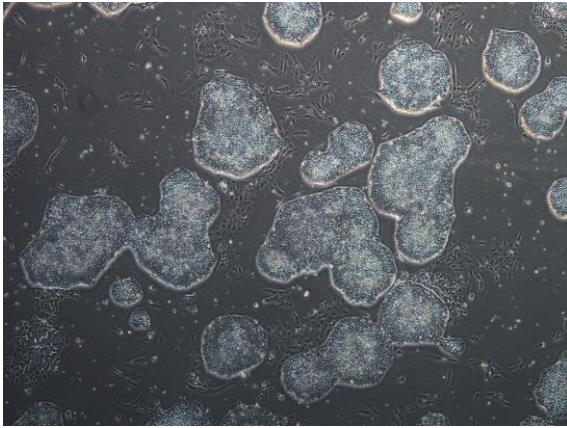
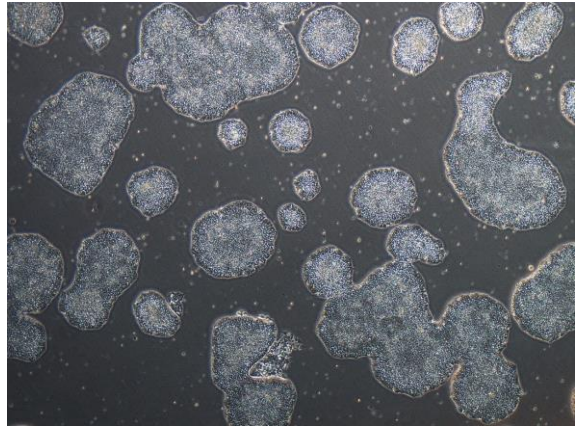


【 CiRA-j-1004 】 Morphology of iPSC colonies

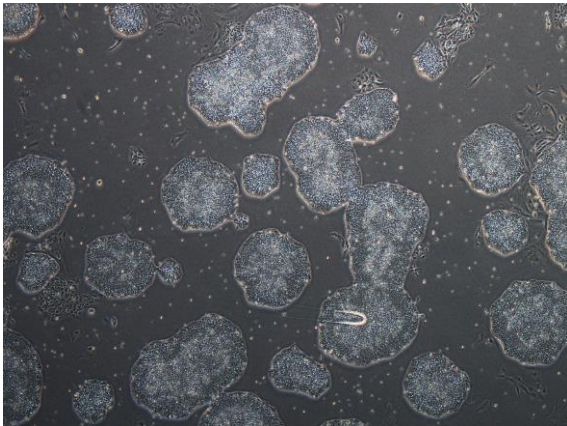
CiRA-j-1004-A: passage-2



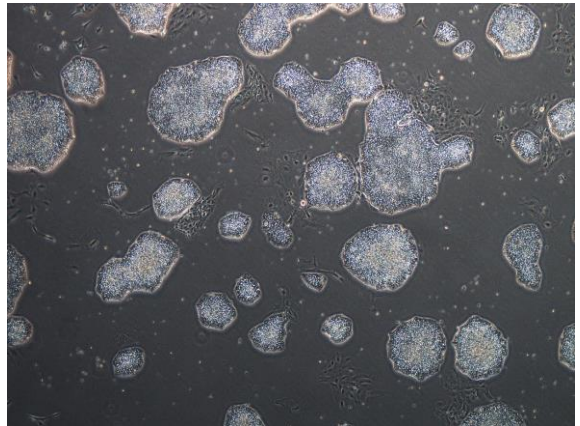
CiRA-j-1004-B: passage-2



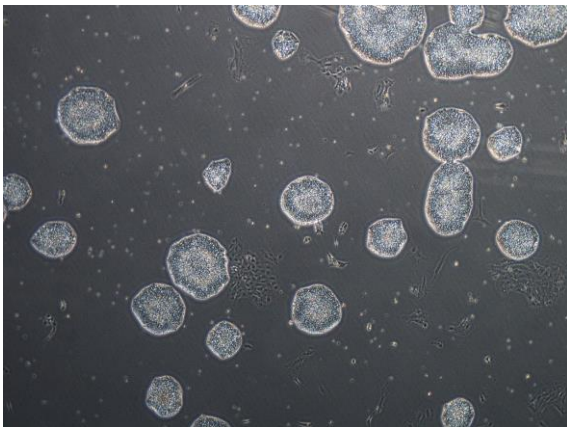
CiRA-j-1004-C: passage-2



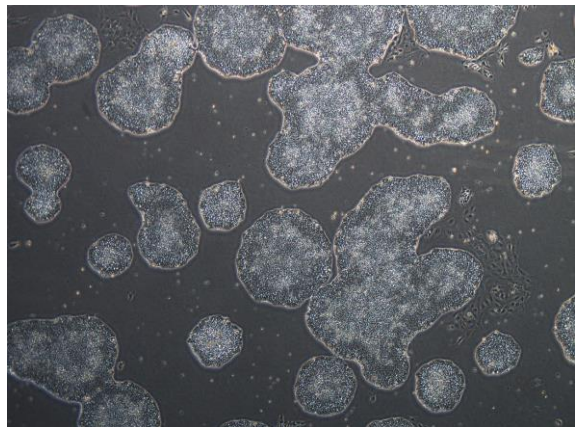
CiRA-j-1004-D: passage-2



CiRA-j-1004-E: passage-2



CiRA-j-1004-F: passage-2



(All images were captured at 4x magnification)